

Testing and calibrating the e-Board

Place your chess pieces in a position like in Figure 1. All pieces are on white squares, only one pawn per color is placed on a black square. The pawns that surround the empty white square should be placed close to the corner in the direction of the empty square. If the amplification is too high this empty white square is likely to show a “ghost” pawn.

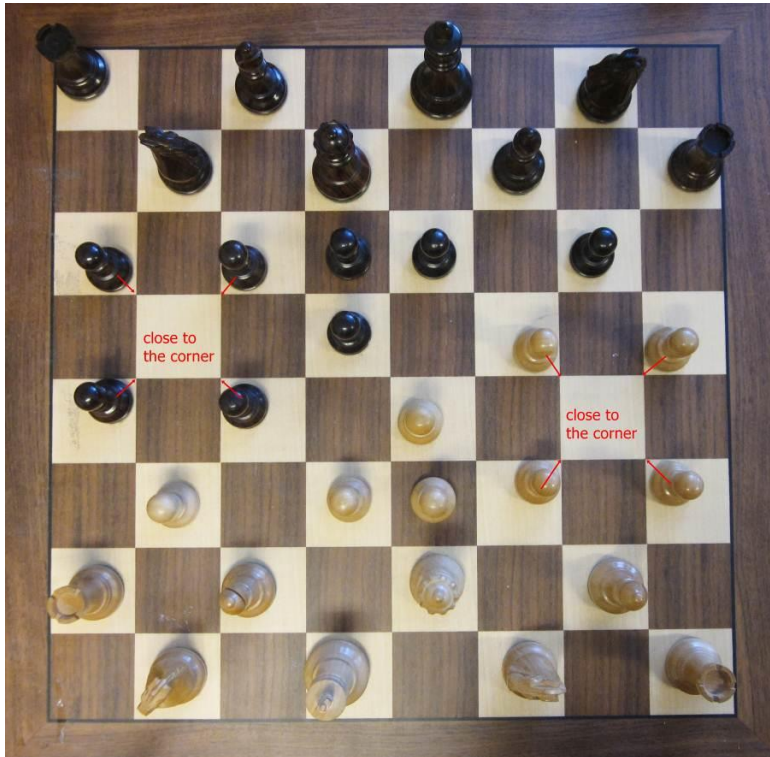


Figure 1 Test positions on the board

To be sure you can take a second test position with all pieces except one on all black squares, like in the screenshot on the right of Figure 2.

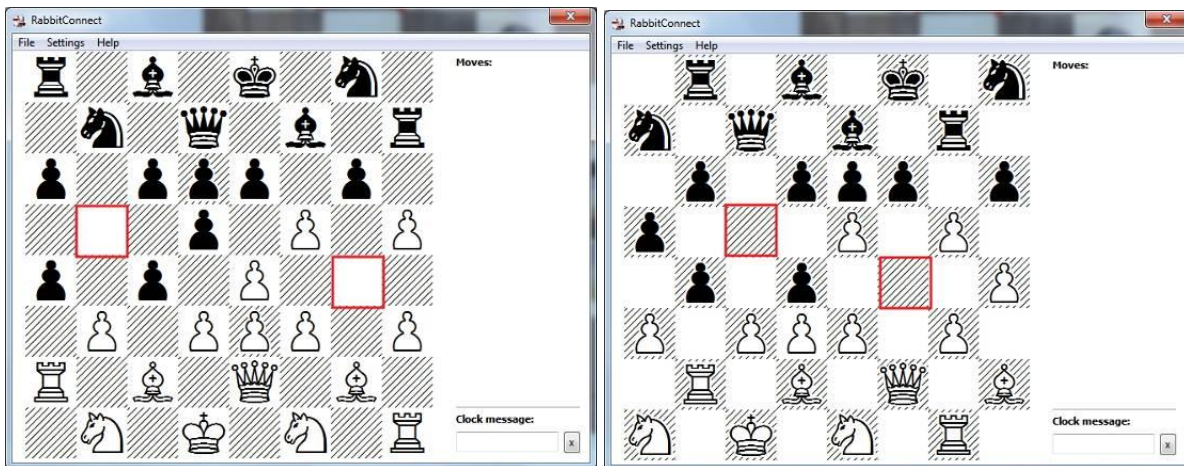


Figure 2 Correct output of the test positions

To increase the sensitivity: look at the component side of the PCB for a square part, size 5 mm x 5 mm, with a screw-slotted centre circle. With a small screwdriver, you may turn it counter clockwise! about 30 degrees (as on a clock, one hour distance for the short hand)
Sometimes you may need more than one step to get all squares recognized without having “ghost pieces”